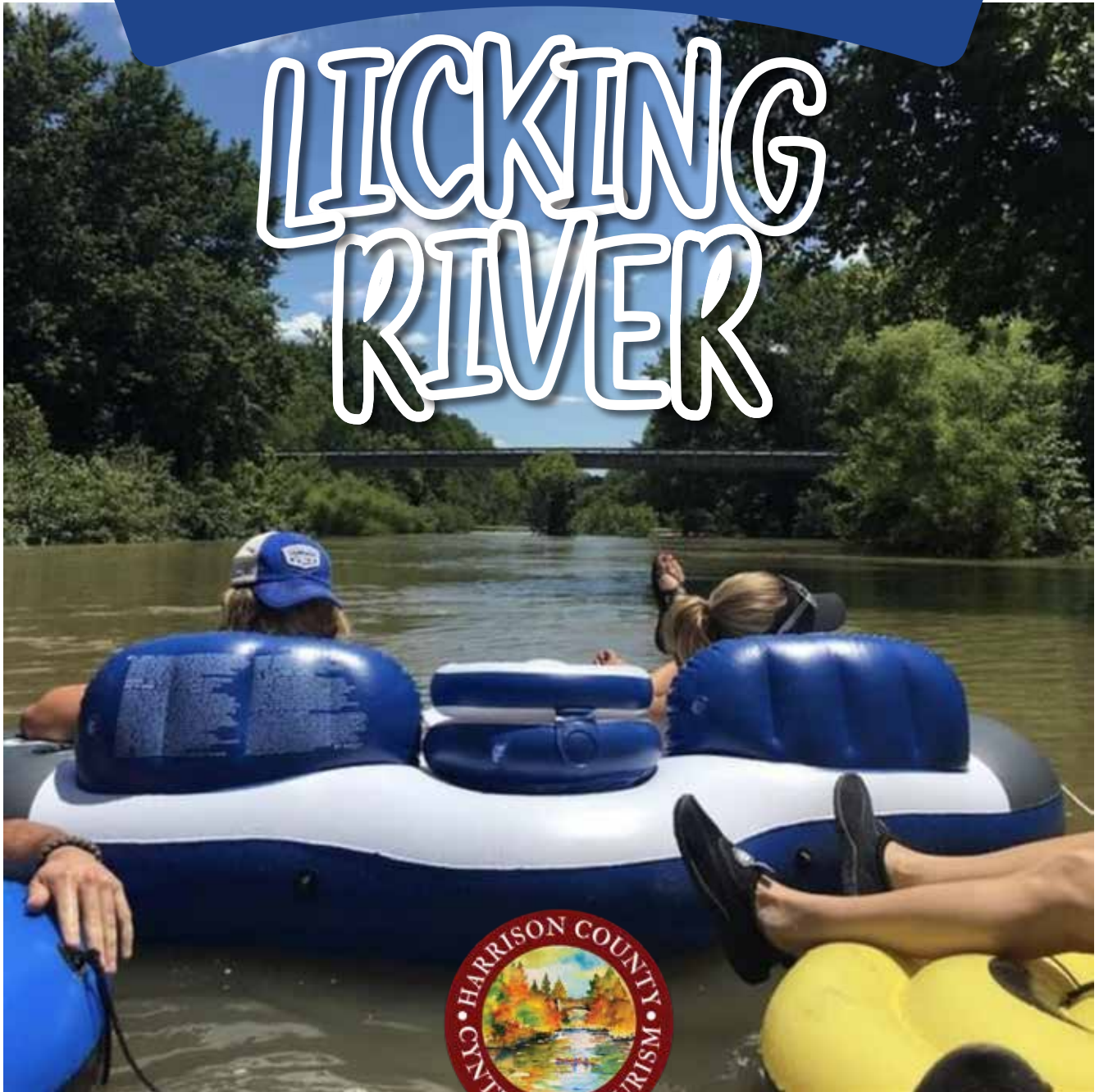


ADVENTURES on the

LICKING RIVER



Leave your cares behind. The Licking River is perfect for fishing, canoeing, kayaking and enjoying nature at its finest.

South Fork of the Licking River

A-B Lair to Terry Dam Boat Access (Airport)

6.5 miles, approx. 3.5 hours

B-C Terry Dam (Airport) to Cynthiana Ramp

2 miles, approx. 1 hour (plan to portage at Terry Dam on rt.)

C-D Cynthiana Ramp to A. Keller Dam

2 miles, approx. 1.5 hours

D-E A. Keller Dam to Poindexter Dam

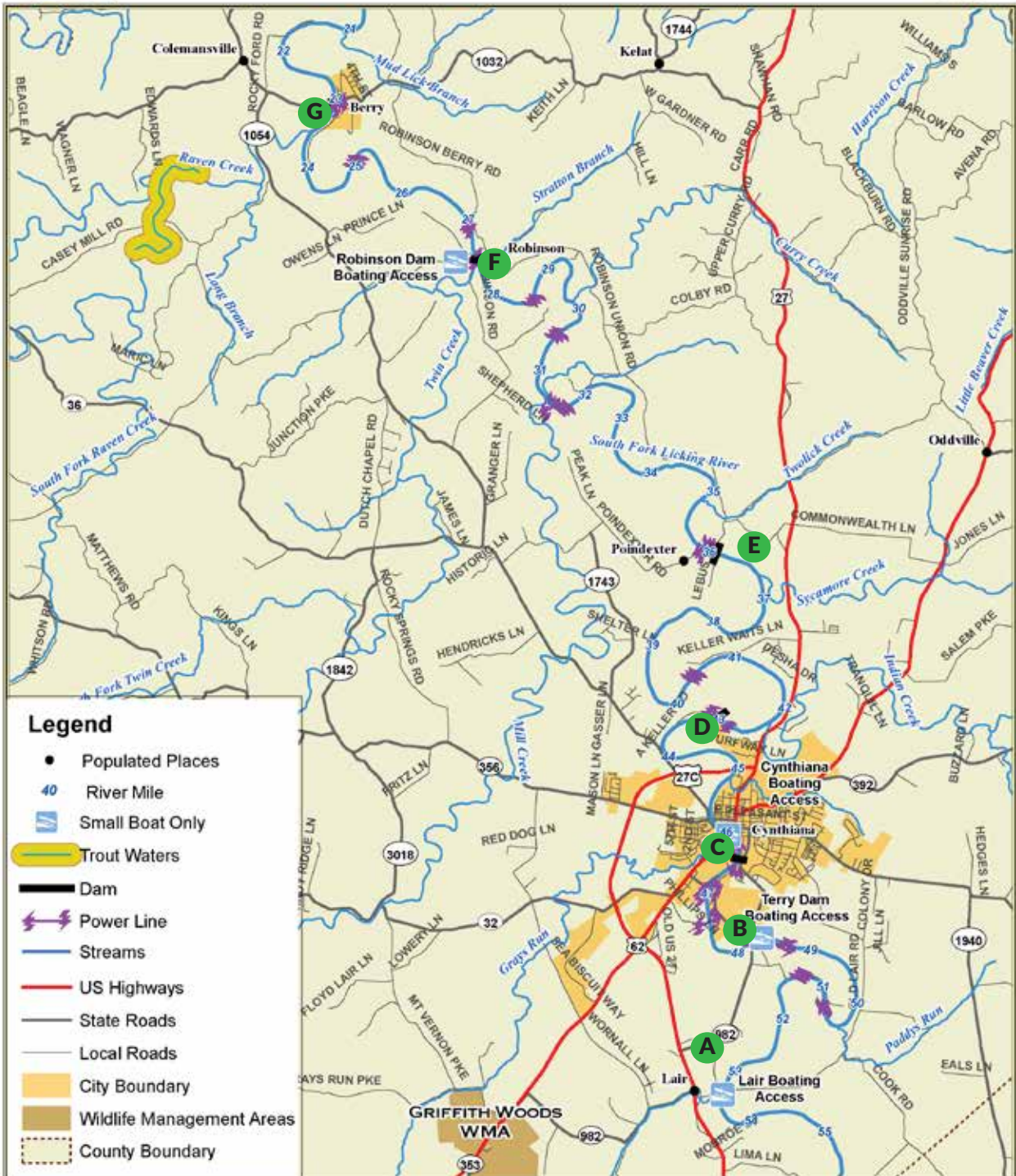
9 miles, approx. 4.5 hours (plan to portage at A. Keller Dam on rt.)

E-F Poindexter Dam to Robinson Dam

8.5 miles, approx. 4.5 hours (plan to portage around Poindexter on rt.)

F-G Robinson Dam to Berry

4.5 miles, approx. 2.5 hours (plan to portage at Robinson Dam on rt.)



Ramp to Ramp Distances
Lair Access to Terry Dam Access = 6.5 miles



0 1 2 Miles

Map prepared by Kentucky Department of Fish & Wildlife Resources Publication Date: June 10, 2020

NOTICE TO BOATERS:
Public access to the South Fork Licking River is at the following locations: Lair Access, Terry Dam Access, Cynthiana Access, and Robinson Dam Access.

Middle Fork of the Licking River

G-H Blue Licks State Park to Claysville

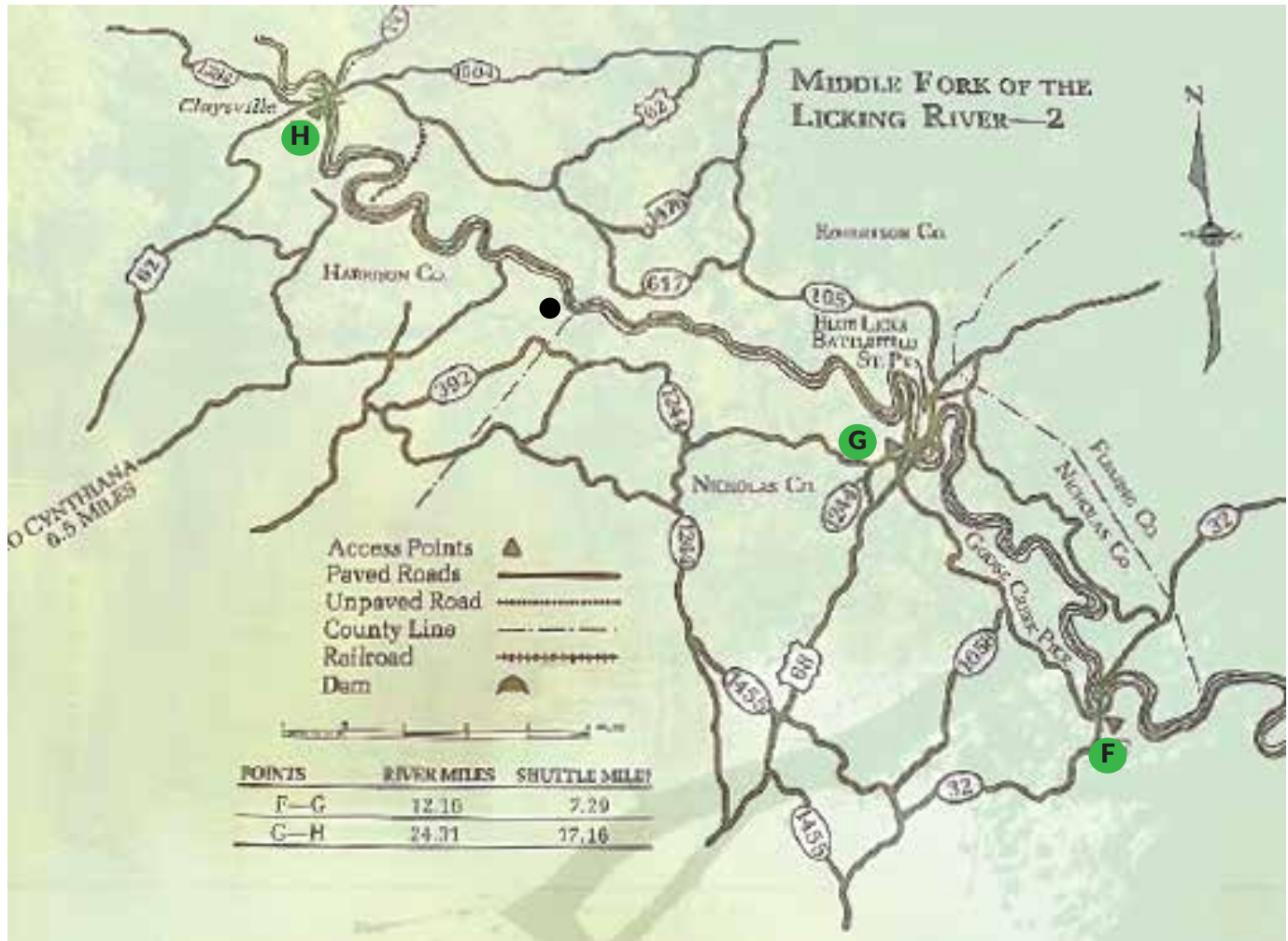
24.31 miles, approx. 12.5 hours
Overnight camping available at Blue Licks State Park

H-I Claysville-Bracken County

17.6 miles, approx 9 hours. Plan to camp.

● Mouth of Cedar Boat Ramp

Camping available through Hip Camp along river bank. Here to Claysville boat ramp - 12 miles, approx. 4-6 hours.



NOTES:

Check water levels before you go here: water.weather.gov/ahps2/hydrograph.php

Beware of low head dams on the South Fork. Portages are marked.

Questions? Contact Us:

Cynthiana Tourism Commission

141 East Pike Street Suite 3, Cynthiana, Kentucky 41031

859-234-5236 | www.cynthianatourism.com

